

# MACDEP<sup>E</sup>NEWS

MONTANA ASSOCIATION OF COMMUNITY DEVELOPMENT EXTENSION PROFESSIONALS

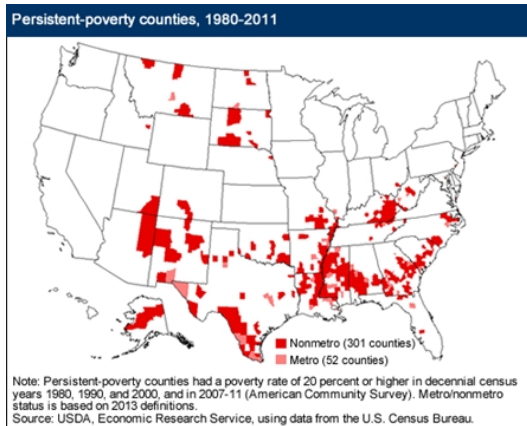
August 2013

## Reports & Resources

### Rural Poverty Persistence

**USDA | [READ STORY](#)**

The persistence of poverty over time is a better indicator of a region's well-being than are poverty levels from any isolated moment in time. This map identifies counties in which 20% or more of the population has persistently been below the poverty line during the past 30 years.



### Single Father Households

**Pew Social Trends | [READ STORY](#)**

Only 1% of households with minors were headed by single fathers in 1960. On the most recent report, this number has increased to 9%. Single fathers, so understood, span a variety of circumstances and living

### President's Corner

The **NACDEP** Association meeting schedule and **Galaxy Conference** (Sept. 16-20, 2013; Pittsburgh, PA) [agenda](#) is now available.

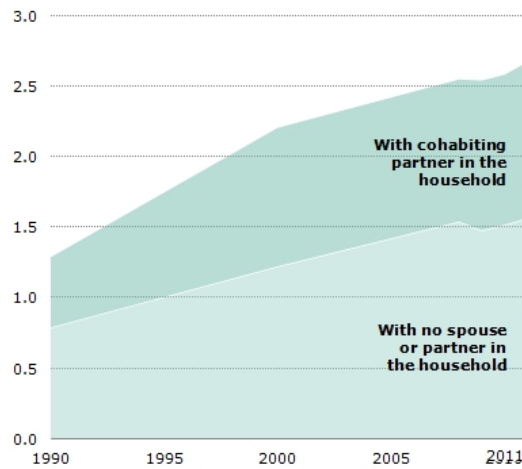
The **MSU Extension Annual Conference** session [RFP](#) is now available with a due date of Aug. 19. The conference will be Oct. 22-24 in Bozeman, MT.

Announcing a Call for Papers on "**Democratic Practice and Community Development**" as a Special Issue of **Community Development: The Official Journal of the Community Development Society**. The special issue will uncover creative tensions and opportunities among diverse perspectives on the theory and practice of community development and provide examples of community development practice that influences the democratic capacity of citizens. Additional

situations; just as an increasing number of roles are being played by women in the household, men are coming to perform more and more varied household functions.

### Types of Single Fathers, 1990-2011

*In millions*



information may be found at [this link](#) with a deadline for submitting an abstract of Sept. 1, 2013.

-Paul Lachapelle  
MACDEP President

## Upcoming Events

### Midwest Community Development Institute

August 5-8, 2013  
Moline, IL  
Sponsor: Community Development Institute

### Rural Sociological Society

August 6-9, 2013  
New York, NY  
Sponsor: RSS

### NACDEP Galaxy IV

September 16-20, 2013  
Pittsburgh, PA  
Sponsor: NACDEP

### University Economic Development Association

October 27-30, 2013  
Pittsburgh, PA  
Sponsor: University Economic Development Association

### International Association for Community Development

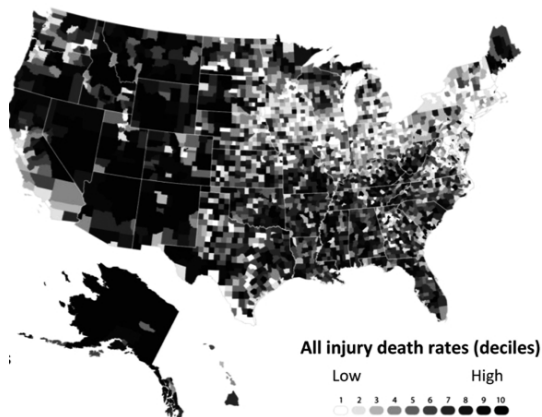
June 9-11, 2014  
Glasgow, Scotland  
Sponsor: International Association for Community Development

## Grants, Awards & Jobs

## Driving in the Country

### Atlantic Cities | [READ STORY](#)

Although homicide rates are higher in metropolitan areas, this article by the Atlantic shows that the risk of suffering injury or death in an automobile accident is actually much higher in rural areas: in fact, you are twice as likely to die in a car accident in rural areas than you are in the city.

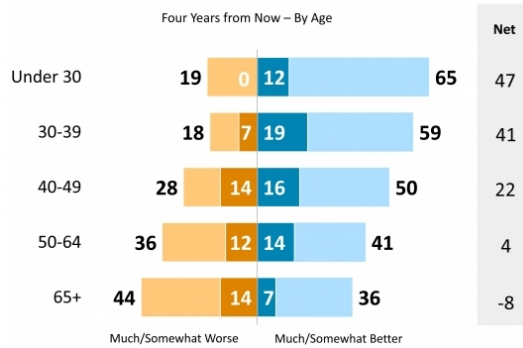


## The Disappearance of the Rural

### Daily Yonder | [READ STORY](#)

The Daily Yonder reports on a public opinion poll showing that there is general concern that small towns are disappearing, and that the rural culture kept alive thereby may be at risk. Rural populations are split with regard to a number of social and ideological issues, but converge on many others, including the central importance of retaining the rural way of life.

### Better Off in Four Years?



## Food Insecurity

### USDA | [READ STORY](#)

A food-insecure household, according to the USDA, is a household in which one or more members are from time to time unable to eat due to insufficient money or resources. The number of food-insecure households in the United States has increased during the past decade, rising from 10.7% in 2001 to 14.9% in 2011.

### Project Learning Tree Greenworks! Grant

Deadline: September 30, 2013  
Funder: Project Learning Tree

### Grant to Support Science or Math Education: K-5 Teachers

Deadline: October 1, 2013  
Funder: Toshiba America  
Foundation

### Academic-Community Partnership Conference Series (R13)

Deadline: October 17, 2013  
Funder: Eunice Kennedy  
Shriver National Institute of  
Child Health and Human  
Development, NIH

### Grants for Environmental, Economic and Social Sustainability Initiatives

Deadline: December 1, 2013  
Funder: The Ray C. Anderson  
Foundation

### Regional & National Grants

Deadline: Open  
Funder: Aetna Foundation

### National/International News

#### House Committee Advances Energy Bill

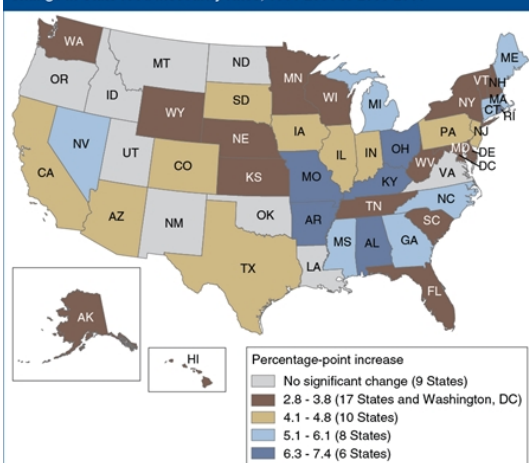
Durango Herald; July 25

#### New Explanation for Colony Collapse Disorder

LA Times; July 24

#### EPA Reverses Idaho Pollution Decision

Change in State food insecurity rates, 1991-2001 to 2009-2011



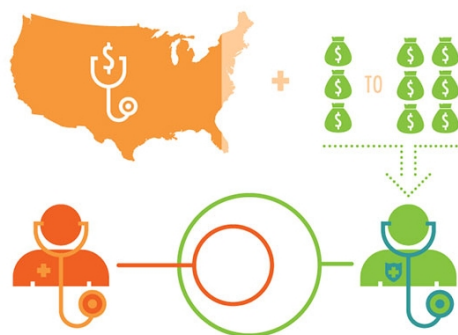
Note: Data for 3 years (1999-2001 and 2009-2011) were combined to provide more reliable State-level statistics.  
Source: USDA, Economic Research Service using data from Current Population Survey Food Security Supplement.

## Why Healthcare Costs So Much

Carrington College | [READ STORY](#)

This infographic, provided by Carrington College, analyzes the causes and reasons behind the ever-increasing cost of healthcare in the United States, explicating the diverse and multivalent recipe of factors involved in the mix.

The U.S. spends about **90% more on healthcare** when compared to other industrialized countries and **3 to 6 times more on specialist doctors.**



## Community Happiness and Social Media

Atlantic Cities | [READ STORY](#)

Researchers at the University of Pennsylvania and Michigan State University have developed algorithms by

Idaho Statesman; July 24

### Colorado Rural Health at Risk

Denver Post; July 24

### New Rules for Firefighting

CSM; July 23

## Montana News

### Local Company on Good Morning America

Independent Record; July 25

### Public Road Analysis in Flathead

Missoulian; July 24

### Montana Forest Plan Suit Thrown Out

Helena IR; July 22

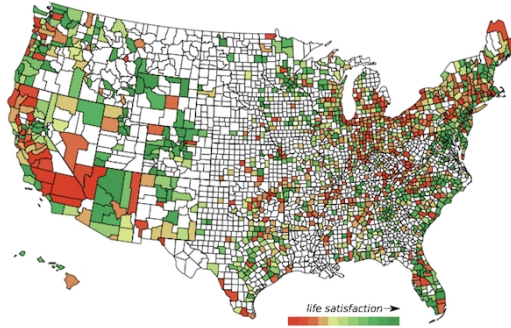
### Bakken Oil Boom is Montana Amtrak Boom

Billings Gazette; July 21

### \$2 Mil Pledged for Montana Entrepreneurs

Great Falls Tribune; July 19

which millions of posts to the social networking website Twitter have been analyzed for their "happiness content." The result is a dataset showing the relative levels of happiness, or "wellbeing," for 1300 U.S. counties.



MSU Extension Community Development | Wilson Hall 2-117 P.O. Box 172240 | Bozeman, MT 59717-2240

Tel: (406) 994-3620

Back issues of the MACDEP E-news are available [here](#)

To subscribe to the Montana CD E-Newsletter, send a request to: [commdev@montana.edu](mailto:commdev@montana.edu)