

# Be Aware of These Common Stimulants

## PRESCRIPTION AMPHETAMINES

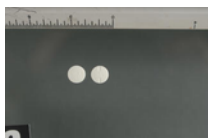


Photo by DEA  
Amphetamine

Prescription stimulants used to treat Attention-deficit hyperactivity disorder (ADHD). Misused as a study aid, to stay awake, and to suppress appetites. Prescribed as: Adderall®, Concerta®, Dexedrine®, Focalin®, Metadate®, Methylin®, Ritalin®.

## PRESCRIPTION METHAMPHETAMINE HYDROCHLORIDE

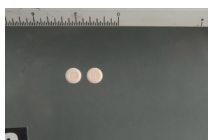


Photo by DEA  
Pill form Methamphetamine

Stimulants that speed up the body's system, that comes as pill or powder. Available in prescription as Desoxyn® to treat obesity and ADHD.

## SIGNS OF PRESCRIPTION DRUG MISUSE

- Stealing, forging, or selling prescription opioids or stimulants
- Taking higher doses than prescribed
- Excessive mood swings or hostility
- Increase or decrease in sleep
- Poor decision-making
- Appearing to be high, unusually energetic, or sedated
- Requesting early refills or continually "losing" prescriptions
- Seeking prescriptions from more than one

## COCAINE



Photo by DEA  
Cocaine

White, crystalline powder derived from coca leaves. Cocaine base (crack) looks like small, irregularly shaped white rocks.

## Illicit METHAMPHETAMINE



Photo by DEA  
Crystal methamphetamine

Crystal meth resembles glass fragments and is an illegally altered version of the prescription drug that is cooked with over-the-counter drugs in meth labs.

# Be Aware of These Common Stimulants

## BATH SALTS (NOT FOR HUMAN CONSUMPTION)



Photo by DEA  
Bath Salts

Synthetic cathinones, a class of drugs that have one or more laboratory-made chemicals similar to cathinone. Cathinone is a stimulant found naturally in the khat plant.

"Bath salts" are sometimes marketed as cheap substitutes for other drugs such as MDMA (Molly or Ecstasy) or cocaine.

## KRATOM (DRUG OF GROWING CONCERN)



Photo by DEA  
Kratom

Kratom is a tropical tree native to Southeast Asia. Consumption of its leaves produces both stimulant effects (in low doses) and sedative effects (in high doses), and can lead to psychotic symptoms, and psychological and physiological dependence.

## KHAT-CATHINONE-CONTROLLED SUBSTANCE



Photo by DEA  
KHAT

Stimulant drug made from the leaves and twigs of an evergreen shrub. Active ingredients are cathine and cathinone, with cathinone being among the most tightly regulated in the U.S. The range of punishment for possession of khat depends on the amount possessed and can include up to life in prison.

### Signs of an Overdose

- Restlessness
- Tremors
- Overactive reflexes
- Rapid breathing
- Confusion
- Aggression
- Hallucinations
- Panic states
- Fever
- Muscle pains & Weakness

### Need Help?

If this is an immediate emergency, call 911. To find a treatment center visit [samhsa.gov](http://samhsa.gov), call 211 to find local support or text MT to 741741 to reach the Crisis Text Line.