



MONTANA
WWAMI

Montana's Medical School 2026 EXECUTIVE SUMMARY



WWAMI (Washington, Wyoming, Alaska, Montana, Idaho) Medical Education is a cooperative program of the University of Washington School of Medicine in Seattle that works in partnership to provide regional medical education. WWAMI serves Montana students.

- In its over 50 years in Montana, the program has provided the opportunity for medical education to 1167 Montana residents.
- The entering class of 2025 is comprised of 12 men and 18 women who represent the Montana communities of Big Sky, Billings, Bozeman, Belgrade, Clancy, Colstrip, Cut Bank, Kalispell, Lewistown, Lockwood, Helena, Missoula, Melstone, Pryor, and Shelby.
- Of the thirty entering 2025 students, 9 were accepted into the Montana TRUST (Targeted Rural/Underserved Track) program.
- The return rate of physicians to Montana from the WWAMI Program over the lifetime of the program (includes all 5 states) is 65%.
- WWAMI graduates have also chosen careers which are suited to the regional needs for primary care physicians: Since the inception of the program, 40% of UWSOM grads in Montana have chosen primary care specialties.

New Montana WWAMI TRUST Team

In 2025, Montana welcomed the new Montana TRUST Director, Sara Houston along with TRUST program coordinator, Ashleigh Dallas. They replace outgoing Montana TRUST Director, Lisa Benzel, who created and served in the director role since 2013.



Foundations Phase

Building a "WWAMILY" On September 12, 2025, MSU welcomed the 53rd Montana WWAMI class at the annual White Coat Ceremony where students received their stethoscopes and white coats.



Montana WWAMI Student Orientation

Orientation for the class of thirty entering students began July 10th at the WWAMI facility at Bozeman Health. The entering students participated in five days of orientation prior to beginning coursework on July 17th. On September 2nd, the students started a nine-day immersion experience during which they began their training in basic clinical skills and exposure to patients in a longitudinal clinical setting with a focus on primary care, chronic care, and continuity of care. With 30 classmates and 18 months spent in Bozeman, the foundations experience is exciting, challenging, and intimate: the beginning of a new "WWAMILY."

Students take an intense academic load during their initial year and a half of medical training. The same curriculum that is offered at the University of Washington School of Medicine is standardized across all regional sites (e.g. same cases, lectures, quizzes, exams, etc.). The Foundations Phase is built on three key components: 1) an initial period with instruction in basic clinical skills ensures that all students are ready to work with patients during the patient care portion of Foundations; 2) basic science instruction primarily organized in short blocks of instruction with each block consisting of related, integrated topics; 3) less classroom time, limited lectures, and more use of active learning content. Cross-cutting scientific areas, such as pathology, anatomy & embryology, and pharmacology, are integrated into the Foundations' blocks. There are 9 blocks: Fundamentals of Medical Science & Research; Infections & Immunity; Cancer, Hormones, & Blood; Muscles, Joints, Bones, & Skin; Cardiovascular System; Respiration & Regulation; Head, Neck, & Gut; Mind, Brain and Behavior; and Reproduction & Development. Students also participate in Integration weeks with coursework designed to integrate the topics from previous blocks in preparation for sitting for Step 1 following Foundations phase. During Foundations, students study Medicine Health & Society coursework, receiving content in themed areas important to the practice of medicine such as health systems, quality and safety, population health, global health, social determinants of health/health equity, diversity, professionalism, ethics, inter-professional care, communication, and more. Students are enrolled for 5 semesters at Montana State University (Summer, Fall, Spring, Summer, Fall) with approximately 90 total graduate credits.

The Montana WWAMI Program offers the following non-clinical electives: Montana Medical History Conference; Rural Health Care Delivery Systems; Culinary Medicine; and Health Equity & Community Organizing.

Montana State University Faculty

The WWAMI faculty at MSU consists of five faculty with joint appointments in basic science departments at MSU and 23 clinical instructional faculty, including physicians and a pharmacologist, who have affiliate appointments at UWSOM.

Foundations – Journal Club and Osler’s Evenings

The Montana TRUST director and the clinical deans organize Journal Club and Osler’s Evenings presentations for students. In Journal Club, students review articles related to healthcare delivery with a rural and underserved focus and then gather over a lunchtime for discussions around the selected topics. Osler’s presentations are offered to all foundations students and feature speakers who have chosen the road somewhat less traveled in going into rural or underserved medicine. The sessions include presentations by the physicians (and often include spouses/significant others) that highlight their journey into and through medicine. Guest presenters in 2025 were Anaconda physicians, Katie Dawson (general surgery), Hannah Vigne (OB/G) Nate Cook (hospitalist), Ellie Schiedermayer (general IM) and Butte physicians, Carey Downey & Serena Brewer (both family medicine).

Rural Underserved Opportunities Program (RUOP)

As the flagship program for UWSOM, RUOP has been operating for 36 years. RUOP aims to increase and foster student interest in primary care and rural/underserved medicine through a four-week rotation across the WWAMI region during the summer between the first and second years of medical school. In 2025, 20 WWAMI students (15 of them from the E-24 Montana WWAMI class) were placed at RUOP sites throughout the state, working with 66 volunteer physician mentors and site coordinators. Most of the students participating in RUOP combine their experience with the III (Independent Investigative Inquiry) community project. The RUOP program is a wonderful opportunity for the students, preceptors, and the hosting communities.

2025 Medical Student (E-24 class) Independent Investigative Inquiry (III) Poster Session Awards

On November 10, 2025, second-year Montana WWAMI medical students shared their ideas about improving health at the annual poster session in Bozeman. The research of 27 students in poster format covered a wide range of topics, reflecting students’ curiosity and commitment to improving health across Montana and the WWAMI region. Two sets of awards recognized outstanding student work: In the People’s Choice Awards, voted on by the students themselves, a tie led to dual honors in the RUOP category for Mackenzie Bernhardt and Lauren Bingham, while Nina Coppolillo earned the top spot in the SOD (Scholarship of Discovery) category. Faculty reviewers also selected recipients for the Best Poster Awards, highlighting exceptional clarity, rigor, and impact. Rebecca Boylan was recognized in the RUOP category, and Kyle Montgomery received the top award among the SOD posters.



Lauren Bingham
Increasing Patient Opioid Education & Community Resource Utilization in Darby



Rebecca Boylan
Exercise as Medicine: Running for Body and Spirit in the Apsáalooke Tribe and Community of Hardin



Nina Coppolillo
Decreased metabolism of cervical immune cells after treatment of bacterial vaginosis



Kyle Montgomery
Comparison of CAR T Cell Administration Routes in Murine CNS Lymphoma



Western Student and Resident Medical Research Forum

The following E-23 MT WWAMI students presented at WSMRF in Carmel, California in January 2025:



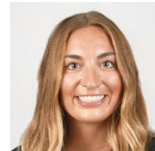
Isbah Khan (Edwin E. Osgood Award)
ANALYSIS OF DONOR-RECIPIENT TELOMERE DYNAMICS IN LONG –TERM SURVIVORS OF ALLOGENIC HEMATOPOIETIC CELL TRANSPLANTATION.



Chelsea Koessel
ADVOCATING FOR A UNITED AND EQUITABLE COMMUNITY VIA THE UPTOWN BUSINESS IMPROVEMENT DISTRICT IN BUTTE, MONTANA



Gabrielle Spurzem
FINANCIAL TOXICITY IN CUTANEOUS LYMPHOMA: A MIXED METHODS STUDY



Mackenzie Winters
WORK PERFORMANCE AND QUALITY OF LIFE AMONG YOUNG ADULT CANCER SURVIVORS

The Clinical Years In Montana

During Academic Year 2025-2026, an estimated 200 students from across the WWAMI region, including Montana, rotated in approximately 400 clerkship rotations in the state. Of these, 20 students were in the Montana Tracks (third- and fourth-year) and 11 were at WRITE sites. Montana has approximately 600 UWSOM-appointed clinical faculty. Montana WWAMI students appreciate the opportunity to do a significant portion of their clerkship rotations in the state.

Montana WWAMI Tracks & Clerkships

Each spring, a group of UWSOM patient care phase students embark on their clinical learning. Clerkship rotations are available to WWAMI students in communities across the state including Great Falls, Helena and Kalispell. Montana also offers training tracks in Billings, Bozeman, and Missoula, allowing completion of many third-year required clerkships (internal medicine, family medicine, pediatrics, psychiatry, surgery, and OB/Gyn) within those communities. Tracks are a popular option for students who want to stay in their home state as much as possible. Montana also offers a fourth-year Explore & Focus track, which is a state-based track rather than city-based.

Dr. Amy Solomon in Billings, Dr. Chris Jons in Missoula, and Dr. Julie Topping in Bozeman are the Track directors and provide direct support and oversight of Track and clerkship activities. For AY 2025-2026, there were four third-year track students in Billings, Missoula, and Bozeman. The fourth-year state-wide Explore & Focus Track hosted four students.

UWSOM clerkship lectures are available via streaming video, with some clerkships offering additional online teaching opportunities. WRITE clinical learning occurs at Montana’s TRUST sites in a longitudinally integrated clerkship format.

In May, Area Health and Education Center representatives and Billings Track students met with local high school students at the Billings Career Center to discuss opportunities and paths into various healthcare careers. Topics covered included medical school expenses, scholarships, and specifics about the Billings WWAMI track and clerkship experience. Montana WWAMI encourages student participation in such pipeline activities.



Billings Track students, Eli Engledow, Zarryn Duong, and Mackenzie Winters

Montana Third Year Required Clerkships

Family Medicine

Billings
Bozeman
Butte
Dillon
Missoula
Whitefish

Internal Medicine

Anaconda
Billings
Bozeman
Dillon
Great Falls
Lewistown
Missoula

OB/GYN

Anaconda
Billings
Bozeman (2)
Butte
Glasgow
Great Falls
Hamilton
Helena
Kalispell
Livingston
Miles City
Missoula
Polson/Ronan
Sidney
Whitefish

Pediatrics

Anaconda
Billings
Bozeman
Great Falls
Helena
Kalispell
Missoula

Psychiatry

Anaconda
Billings
Bozeman
Helena
Kalispell
Missoula

Surgery

Billings
Bozeman
Kalispell
Missoula

Montana Fourth Year Required Clerkships

Emergency Medicine

Billings
Bozeman
Great Falls
Missoula (2)

Neurology

Billings
Billings-Neurosurgery
Bozeman
Great Falls
Helena
Kalispell
Missoula



MONTANA WWAMI
TRUST
UW SCHOOL OF MEDICINE

MONTANA TRUST (Targeted Rural Underserved Track)

Now in its 17th year, TRUST provides Montana WWAMI students with a continuous connection between underserved communities, medical education, and health professionals in the state. With admission through a targeted application process, TRUST students

are linked to underserved communities and with existing UW courses and programs, including the Underserved Pathway, RUOP and WRITE. These longitudinal linkages promote and support students' interests in rural and underserved health workforce training.

- With the E-2025 class, 9 students were accepted as TRUST scholars. They represent the following hometowns: Cut Bank, Kalispell, Lewistown, Livingston, Melstone, and Shelby.

WWAMI Rural Integrated Training Experience (WRITE)

The WRITE Program is a clinical medical education program developed by the University of Washington School of Medicine to help meet the need for rural physicians in the WWAMI region. The success of this unique program is due to the integration of community involvement, continuity of experience, and a proven curriculum. The impetus for creating WRITE was to expand primary care and rural training options at the University of Washington; develop additional training experiences in the WWAMI states; foster the primary care mission of the University of Washington; and provide more physicians for rural practice in the Pacific Northwest.

Curriculum-wise, WRITE is designed to give selected third-year medical students an appropriate mix of ambulatory and hospital experience during a longitudinal clinical education experience at a rural teaching site. Throughout the program, WRITE students can develop a practice style while learning how to treat a broad range of medical, surgical, and psychological problems. Learning experiences emphasize the rural physician's responsibilities and roles of diagnosing, treating, and managing many health problems on a longitudinal, continuing basis, while calling upon all the health care resources available in the community. All TRUST students participate in WRITE.

There are 12 TRUST sites in Montana. Thirteen students participated in WRITE in 2025; nine in 2026. RUOP sites are designated by green dots.





Anaconda TRUST scholar McKay Guckenber, E-23

Residency Match

On March 21, 2025, 26 Montana WWAMI students matched into 13 specialties: Anesthesiology, Orthopedic Surgery, Emergency Medicine, Pathology – Anatomic and Clinical, *Family Medicine, *Pediatrics, *Internal Medicine, Psychiatry, Obstetrics & Gynecology, Surgery – General, Ophthalmology, and Thoracic Surgery. Nearly 40% of the 2025 graduating class matching into a *primary care specialty.



(Top row) Randy Cure, Robell Bassett, Lindsey Riley, Trey Dschaak, Michaela O'Donoghue, Paul Wilson (Bottom row) Marlow Schulz, Chloe Koessl, Riley Galt, and Corbin Merchant.

Blanket Ceremony – Hooding Week

On the morning of the Physician's Oath & Hooding Ceremony, three Montana WWAMI TRUST graduates, Ellen Guyer, Amy Perkins (Chickasaw Nation), and Bronte Tani, were honored in a special Blanket Ceremony recognizing their completion of the Indian Health Pathway.



Montana WWAMI Students Honored with Scholarships at MMA Annual Meeting

The Montana Medical Association (MMA) recently honored four Montana WWAMI students at its 147th annual meeting and dinner in Helena, awarding each a \$1,000 scholarship in recognition of their dedication to medicine and service to communities across the state: 2025 recipients were medical students Barla Beaudoin of Red Lodge and Geri Cutler of Helena, and third-year students Isbah Khan of Billings and Brittney Tierney of Butte.



PRE-MED – Annual Summit

Montana WWAMI, along with PreMed Advisors from Carroll College, MSU and UM, organizes a pre-med summit every year for those interested in finding out more about the medical school application process. The 2025 event was held at Missoula College on October 25th. This all-day event gathered over 100, mostly undergraduate attendees and marked the highest registration and attendance to date. The event was made possible by the following sponsors: Carroll College, Griz Med, Montana AHEC, MHA, Montana Health Research & Education Foundation, MSU, PureView Health Center, and Sidney Health Center.



The US National Guard hosted a table at the PreMed Summit and answered students' questions.



Pre-med Advising

Montana WWAMI clinical deans and the Montana TRUST director regularly visit pre-med programs to present on the pathway to medical school, including the October 20th visit to the University of Montana pre-med students by clinical dean Erickson. In addition, Montana WWAMI hosts regular live interactive webinars to answer questions that Montana residents might have about attending medical school. The webinars introduce participants to the Montana WWAMI program and curriculum and provide information about application prep considerations and details about residency. The June 2025 webinar was *Pathway to Med School: Leveraging Shadowing, Experience, & Advisors for Success*.

Faculty Development – Annual Conference

The annual Montana WWAMI Faculty Development Conference, April 4-6, 2025, took place at Fairmont Hot Springs Resort in Anaconda. The conference theme, *Forward into the Future: Nurturing Excellence in Montana WWAMI Medical Education* provided an array of engaging topics for the weekend, including two particularly inspiring talks by CMO of Codman Square Health Center in Boston and Vice-chair at Boston University Medical School Dept. of FM, Renee Crichlow, MD: *All of Us and the Necessity of Action and Putting Mission into Motion, Skill-building for Longterm frameworks for Sustainable Change*. This annual conference provides WWAMI educators, leaders, and students opportunities to share ideas and learn alongside each other. Preconference meetings included the annual TRUST/WRITE Faculty Forum and the bi-annual MT WWAMI All-Faculty Retreat.



Dr. Renee Crichlow (middle) with Hardin TRUST faculty Dr. Ashley Quanbeck and Foundations faculty, Dr. Zach Meyers

Bi-Annual All-Faculty Retreat

The spring all-faculty retreat occurred on April 4, 2025, at Fairmont with a focus on changes to clinical assessments as the UWSOM moves toward pass/fail assessments and competency-based evaluations. Key presenters included Joshua Jauregui, MD Assistant Dean for Clinical Curriculum, UWSOM, and Frank Batcha, MD, Idaho Assistant Dean and WRITE Director with the Office of Rural Programs.

Similarly, the autumn all-faculty retreat, held in Bozeman at the WWAMI campus on November 7th focused on strengthening curriculum, enhancing student support, and expanding rural-training partnerships. The day focused on shared commitment to continuous curriculum improvement, strong feedback loops, and thoughtful adaptation of best practices, positioning Montana WWAMI to continue delivering high-quality, context-responsive medical education statewide.

Additional faculty development sessions included a January 22nd mini-retreat with WWAMI preceptors in Billings who met with Drs. Laura Goodell, Jay Erickson, and Amy Solomon for a dinner and faculty development session on writing letters of recommendation for clerkship students, and on March 3rd, Drs. Somnath Mookherjee and Laura Goodell presented their talk, *Generations Intertwined: Teaching Medicine with Purpose and Perspective to Missoula faculty*.

Graduate Medical Education (Gme) – Montana Graduate Medical Education Council

The Montana Graduate Medical Education Council continues to support the goal of increasing the physician workforce in Montana by developing an infrastructure to support GME within Montana. The GME Council makes recommendations regarding the physician workforce and Montana GME needs; helps coordinate new Montana GME development; seeks financial support to sustain and expand Montana GME; and advocates and effectively communicates the value and benefit of a robust MT GME effort. The GME Council meets monthly (virtually) to discuss GME policy, finance, advocacy, and workforce, and to share information among the programs. The Council has enacted a sustainability plan to maintain these important engagement efforts into the future. GME Council activities include resident and employer networking events in Billings and Missoula, faculty development support, a reports on the physician workforce and documents to share for advocacy and education.

The GME Council was successful in advocating for an increased appropriation at the state level during the 2025 Montana Legislative session. Additional advocacy efforts focused on passage of a Moonlighting Bill which supports residents and hospitals. The council also welcomed the new Benefis Internal Medicine Residency in Great Falls; the program matriculated its first class of 10 incoming residents in 2025.

Montana GME Council Executive Committee members are Rob Stenger, MD, Family Medicine Residency of Western Montana, Chair; Garth Brand, MD, Montana Family Medicine Residency, Vice-Chair; JJ Carmody, Billings Clinic, Secretary/Treasurer; and Michael Bush, MD, Intermountain/St. Vincent Healthcare, Past-Chair.

Council calls are open for any interested stakeholder. Administrative support and coordination for the Council is provided by Cindra Stahl through the MT AHEC.

Montana Family Medicine Residency (MFMR)



Montana Family Medicine Residency (established in 1996):
Billings: 9 residents per year.

The MFMR program provides education, practice, and lifestyle experiences intentionally designed to prepare graduates to practice medicine in rural/frontier and underserved communities across Montana. Montana has the second highest rate nationally for retaining residency-trained physicians in the state. Over 60% of the residency graduates from the MFMR choose to stay in Montana, contributing around 13% state's primary care physician workforce. The MFMR's main location is Billings, with rural clinics in Bridger, Joliet, and Worden, and with rotations across the region. Beginning in AY 2026, MFMR is starting a Rural Training Track in Miles City. MFMR has an active role in the workforce pipeline through student rotations and programs coordinated through the Eastern Montana Area Health Education Center. The WWAMI third-year Track and associated sub-internships attract students who work with the residency faculty and other family physicians in the community.

Dr. Garth Brand is the Program Director.

Dr. James Denisar- Green is the Associate Program Director.

Family Medicine Residency Of Western Montana (FMRWM)

Established in 2013: 10 residents per class, 7 in Missoula 3 in Kalispell. FMRWM is a member of the WWAMI Family Medicine Residency Network.



The Family Medicine Residency of Western Montana exists to provide superior, comprehensive education in Family Medicine. FMRWM is committed to developing family physicians who are compassionate, clinically competent, and motivated to serve patients and communities in the rural and underserved areas of Montana. About 60% of program graduates practice in rural communities, 75% practice in underserved settings and 60% practice in Montana. The FMRWM Program is a 10-10-10 program with 30 residents with 24 residents located in Missoula. The curriculum is focused on preparing residents for full-scope rural and underserved practice, but with the flexibility for residents to pursue individual interests. Six residents participate in a 1:2 track and complete their 2nd and 3rd years of residency in Kalispell. Continuity clinics in Missoula and Kalispell are located in federally qualified health centers. Dr. Rob Stenger is the Program Director. Other program leadership are Associate Program Directors Dr. Mariel Bryden (Missoula), Dr. Emma Wright (Missoula), Dr. Samantha Greenberg (Kalispell) and Rural Director Dr. Darin Bell.



Billings Clinic Internal Medicine Residency Established in 2014:
12 residents per year
(8 categorical + 4 preliminary).

Billings Clinic welcomed its twelfth class of 12 residents to the Billings Clinic Internal Medicine Residency summer, 2025. The Billings Clinic Internal Medicine Residency strives to provide medical education and to encourage residents' active participation in the organization and content of their residency experience. This approach ensures that the needs of every patient are best served, helps each resident achieve the goal of becoming a highly competent, well-trained, compassionate internist, and provides a graduate medical education infrastructure to promote excellence and innovation in clinical care, rural medicine, and quality and safety. The Billings Clinic Internal Medicine Residency Program utilizes Lewistown, Livingston and Hardin as rural training sites.

Dr. Steve Gerstner is the Program Director for the Billings Clinic Internal Medicine Residency.

Billings Clinic Adult Psychiatry Residency Program

(established in 2019): 3 residents per year - Currently two classes are participating with recruitment for the third class.

The Billings Clinic Adult Psychiatry Residency Program is Montana's first psychiatry residency. The program got its start as a track within University of Washington and is now an independent program, all within the state of Montana. Its purpose, to promote health and recovery among individuals with mental illnesses and substance use disorders by treating every patient and every colleague with empathy and dignity, while fostering a safe and supportive environment for teaching, learning, and delivering outstanding psychiatric care. The residency features 44 inpatient psychiatric beds, with about 1/3 dedicated to youth aged 5-17 years and 2/3 dedicated to adults and is the state's largest outpatient psychiatric practice.

Dr. Mariella Herrera Rojas is the Program Director.

UW Psychiatry Residency Track at Billings Clinic

(established in 2019): Billings, 3 residents per year. The psychiatry residency track is in the end stage: There are 2 PGY-4s and 3 PGY-3s from the track on site and after they graduate, the track will only have residents from the Billings Clinic Adult Psychiatry Residency Program. The UW Psychiatry Residency Track at Billings Clinic is no longer recruiting for this program.

Dr. Zijie Su is the Program Director

Benefis Internal Medicine Residency
(established in 2025): Great Falls 10 residents per year.



Benefis Internal Medicine Residency is affiliated with Touro University and Opti-West GME Consortium. Its mission is to educate residents so that they become skilled, empathetic, inquisitive, ethical, and versatile physicians capable of enhancing the health and welfare of the diverse patient community in Montana and beyond. Benefis Health System serves as the main training site for the Internal Medicine Residency Program. Benefis is a 614-bed multidisciplinary, acute care, not-for-profit medical center accredited by the Centers for Medicare & Medicaid Services.

Dr. Michael Sheffield is the Program Director for Benefis Internal Medicine Residency; Jordyn Allen, EdD, is the Program Coordinator.



Montana Area Health Education Center (AHEC)

The mission of the Montana Office of Rural Health/Area Health Education Center is to enhance access to quality healthcare, particularly primary and preventive care, by improving the supply and distribution of healthcare

professionals through community/academic educational partnerships. Some of the activities of the MORH/AHEC include the MT AHEC Scholars Program, which engages health professions students across Montana in interprofessional didactic and experiential education; supporting K-12 health career pipeline programs, and continuing to provide support for the Montana Graduate Medical Education Council with its goal of increasing the physician workforce in Montana. The Montana AHEC is a statewide program. The program office is located at MSU's Mark and Robyn Jones College of Nursing in Bozeman, and regional centers are located in RiverStone Health in Billings (Eastern), U of M in Missoula (Western), Montana Hospital Association in Helena (North Central and South Central), and Montana Health Network in Miles City (North Eastern). The Montana AHEC continues as a partner of the UWSOM, supporting students in rural and underserved areas. Of particular interest in this publication, the Montana Office of Rural Health/Area Health Education Center provides its support for the following:

Interprofessional Education—AHEC Scholars

The Montana AHEC initiated the Montana AHEC Scholars Program in 2017. AHEC Scholars is a nationwide certificate program for students in health professions programs who are interested in enhancing their interprofessional skills in rural and underserved settings. The Montana AHEC Scholars Program is considered one of the most successful in the nation. Student activities include monthly seminars with content based on a core topic area along with numerous learning opportunities. There are currently 445 health professions students enrolled in the program from 10 different colleges/universities and more than 20 different academic programs. All Montana WWAMI TRUST students participate in the program.

Montana Healthcare Workforce Advisory Committee

The Montana Healthcare Workforce Advisory Committee (MHWAC) continues to provide a forum to discuss, collaborate and strategize to strengthen the healthcare workforce landscape throughout our state. The goal of the committee is to enhance the understanding of healthcare workforce initiatives across Montana. MHWAC is hosted virtually on a quarterly basis, following healthcare workforce themes, with an open invitation for partners to share their workforce updates from across the state.

Caring for Indigenous Montanans – Online Education

The Caring for Indigenous Montanans online education is a collaborative effort between the Montana Tribes, Montana DPHHS Office of American Indian Health, and MORH/AHEC. The tribe-specific training program is designed for non-native healthcare workers and students wherein they can learn how to provide culturally appropriate care to our Montana Indigenous communities. This training combines a traditional module-based self-guided training format with a filmed portion wherein learners can hear directly from Indigenous patients from each nation in Montana.

Conferences

Montana AHEC helps plan and support the annual WWAMI Faculty Development Conference, hosted in April 2025. In May 2025, Montana AHEC supported the statewide Community Health Worker Summit, followed by the WWAMI PreMed Summit in October 2025.

Website: <http://healthinfo.montana.edu/>

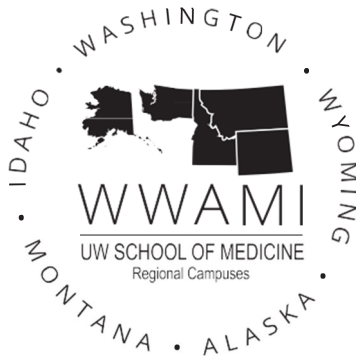
Calling Montana WWAMI Alum: We want to share your stories

Highlighting the history of Montana WWAMI and its impact through the amazing stories and memories you carry. As an alum, let us know if we can feature you in Montana WWAMI social media channels and/or newsletters. Scan the QR code below with your phone to submit your stories!



Here is the link: <https://forms.gle/U9Y1c7p6vKvcxm7a6>





Montana WWAMI
251 Edelweiss Drive, Suite 3B
Bozeman, MT 59718

Return Service
Requested

Montana WWAMI – Teaching Montanans to Become Montana’s Physicians

Celebrating over 50 years of Montana’s Medical School



UW SCHOOL OF MEDICINE
at Montana State University



UWSOM MONTANA WWAMI ADMINISTRATION – and for more information

CLINICAL EDUCATION OFFICE



Serena Brewer, DO
Assistant Clinical Dean
szbrewer@uw.edu

Bernadette Duperron, Program Administrator
duperron@uw.edu

Vanessa Siddoway, MT WWAMI Coordinator
vsidd85@uw.edu

Judi Sullivan, Program Administrator
jasulliv@uw.edu



Jay Erickson, MD
Assistant Clinical Dean
jerick@uw.edu

MONTANA TRUST

Sara Houston, TRUST Director
houston3@uw.edu

Ashleigh Dallas, TRUST Coordinator
abdallas@uw.edu

FOUNDATIONS PHASE



Brant Schumaker,
DVM, MPVM, PhD
Director & Assistant Dean
brant.schumaker@montana.edu

Kayla Ouert, Director of Operations
kayla.ouert@montana.edu

Molly Thompson, Program Coordinator
mollythompson1@montana.edu